

Status:

TENDER

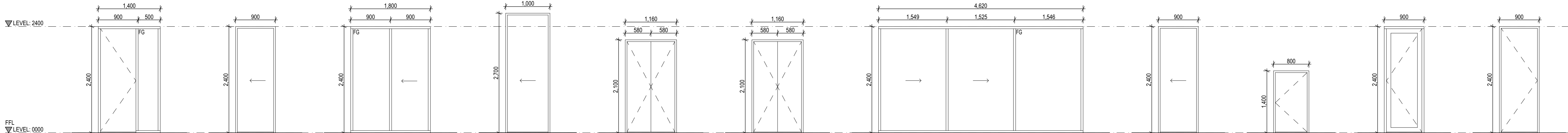
NOT FOR CONSTRUCTION

Legend:

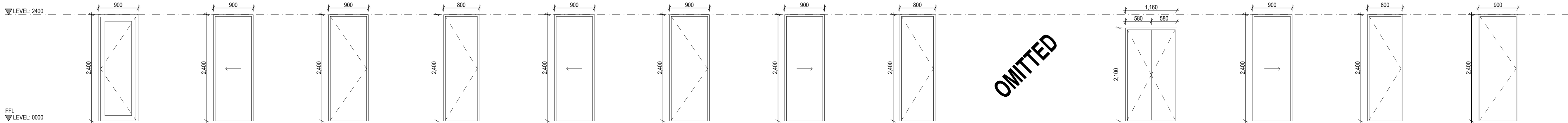
AC	AIR CONDITIONING UNIT	MR	MOISTURE RESISTANT
AP	ACCESS PANEL	MRS#	METAL ROOF SHEETING
BA	BATH	OF	OVERFLOW
BAL	BALUSTRADE	OP	OPAQUE FILM
BG	BOX GUTTER	OV	OVEN
CH	CLOTHES HOOK	PAV	PAVING
CJ	CONTROL JOINT	PB	PLASTERBOARD
CL	CENTRE LINE	PF	PAINT FINISH
CNC	CONCRETE FINISH	POP	PULL OUT PANTRY
col.	COLUMN	PWR	PROPRIETARY WARDROBE
CT	CARPET	R	RAKED CEILING
CT	COOKTOP	RL	REDUCED LEVEL
DB	DISTRIBUTION BOARD	RWH	RAIN WATER HEAD
DP	DOWNPIPE	SB	SPLASHBACK
DPIS	DOWNPIPE WITH SPREADER	SH	SHELF
DR	DRYER	SHD	SUN SHADE
EG	EAVES GUTTER	SHR	SHOWER UNIT
EWC	EXTERNAL WALL CLADDING	SL	SLAB LEVEL
FG	FIBRE CEMENT	SK	SKIRTING
FC	FIXED GLASS	SNK	SNK
FR	FRIDGE	SSC	SHOWER SCREEN
FT	FLOOR TILES	ST	STONE TOP
FW	FLOOR WASTE	TBR	TIMBER FINISH
G#	GLASS	TP	TAP
HA	HANDLE	TR	TOWEL RAIL
HR	HAND RAIL	TRH	TOILET ROLL HOLDER
HWS	HOT WATER SYSTEM	TV	TELEVISION
J#	JONERY UNIT	US	UNDERSIDE OF STRUCTURE
JSF	JONERY STEEL FRAME	WC	TOILET
LAM	LAMINATE FINISH	WM	WASHING MACHINE
MIR	MIRROR	WT	WALL TILES

Legend:

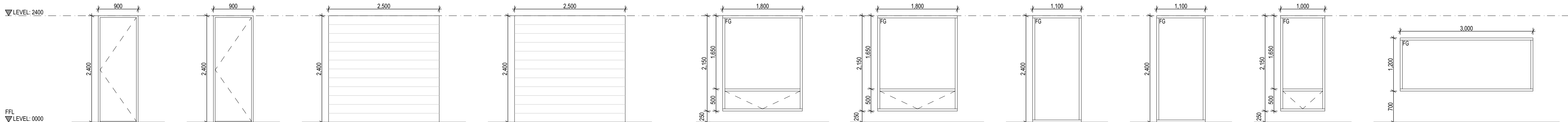
	CEILING LINING MATERIAL		BULKHEAD
	CEILING HEIGHT		WINDOW BLIND PELMET
	DOOR NUMBER		PARTITION TYPE
	WINDOW NUMBER		SET-OUT REFERENCE POINT



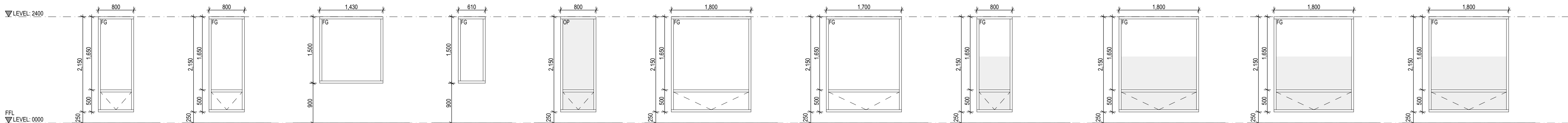
DOOR : D01	DOOR : D02	DOOR : D03	DOOR : D04	DOOR : D05	DOOR : D06	DOOR : D07	DOOR : D08	DOOR : D09	DOOR : D10	DOOR : D11
FRAME: ALUMINIUM FINISH: NATURAL ANOISED LEAF: SOLID CORE TIMBER SWING FINISH: PAINT HARDWARE: LEVER HANDLES LOCKS: KEY SEALS: WEATHER GLASS: G02 MISC: n/a	FRAME: TIMBER FINISH: PAINT LEAF: HOLLOW CORE CAVITY SLIDING FINISH: PAINT HARDWARE: FINGER PULLS LOCKS: n/a SEALS: n/a GLASS: n/a MISC: n/a	FRAME: ALUMINIUM FINISH: NATURAL ANOISED LEAF: ALUMINIUM FRAMED GLASS SLIDING FINISH: NATURAL ANOISED HARDWARE: PULL HANDLES LOCKS: KEY SEALS: WEATHER GLASS: G01 FLY-SCREENS	FRAME: TIMBER FINISH: PAINT LEAF: HOLLOW CORE CAVITY SLIDING FINISH: PAINT HARDWARE: FINGER PULLS LOCKS: n/a SEALS: n/a GLASS: n/a MISC: n/a	FRAME: TIMBER FINISH: PAINT LEAF: HOLLOW CORE DOUBLE SWING FINISH: PAINT HARDWARE: LEVER HANDLES LOCKS: n/a SEALS: n/a GLASS: n/a MISC: n/a	FRAME: TIMBER FINISH: PAINT LEAF: HOLLOW CORE DOUBLE SWING FINISH: PAINT HARDWARE: LEVER HANDLES LOCKS: n/a SEALS: n/a GLASS: n/a MISC: n/a	FRAME: ALUMINIUM FINISH: NATURAL ANOISED LEAF: ALUMINIUM FRAMED GLASS SLIDING FINISH: NATURAL ANOISED HARDWARE: PULL HANDLES LOCKS: KEY SEALS: WEATHER GLASS: G01 FLY-SCREENS	FRAME: TIMBER FINISH: PAINT LEAF: HOLLOW CORE CAVITY SLIDING FINISH: PAINT HARDWARE: FINGER PULLS LOCKS: n/a SEALS: n/a GLASS: n/a MISC: n/a	FRAME: TIMBER FINISH: PAINT LEAF: HOLLOW CORE SWING FINISH: PAINT HARDWARE: LEVER HANDLES LOCKS: n/a SEALS: n/a GLASS: n/a MISC: n/a	FRAME: ALUMINIUM FINISH: NATURAL ANOISED LEAF: ALUMINIUM FRAMED GLASS SWING FINISH: NATURAL ANOISED HARDWARE: LEVER HANDLES LOCKS: KEY SEALS: WEATHER GLASS: G01 MISC: n/a	FRAME: TIMBER FINISH: PAINT LEAF: HOLLOW CORE SWING FINISH: PAINT HARDWARE: LEVEL HANDLE LOCKS: n/a SEALS: n/a GLASS: n/a MISC: n/a



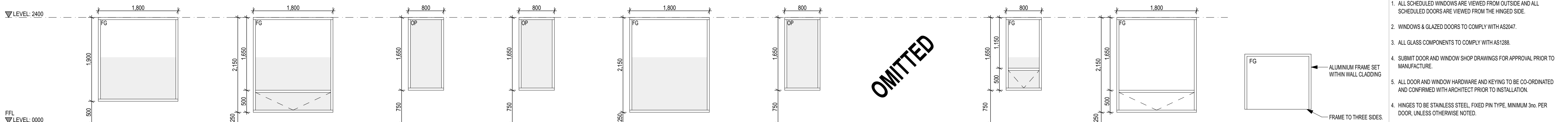
DOOR : D12	DOOR : D13	DOOR : D14	DOOR : D15	DOOR : D16	DOOR : D17	DOOR : D18	DOOR : D19	DOOR : D20	DOOR : D21	DOOR : D22	DOOR : D23	DOOR : D24
FRAME: ALUMINIUM FINISH: NATURAL ANOISED LEAF: ALUMINIUM FRAMED GLASS SWING FINISH: NATURAL ANOISED HARDWARE: LEVER HANDLES LOCKS: KEY SEALS: WEATHER GLASS: G01 MISC: n/a	FRAME: TIMBER FINISH: PAINT LEAF: HOLLOW CORE CAVITY SLIDING FINISH: PAINT HARDWARE: FINGER PULLS LOCKS: BATHROOM SEALS: n/a GLASS: n/a MISC: n/a	FRAME: TIMBER FINISH: PAINT LEAF: HOLLOW CORE SWING FINISH: PAINT HARDWARE: LEVEL HANDLE LOCKS: n/a SEALS: n/a GLASS: n/a MISC: n/a	FRAME: TIMBER FINISH: PAINT LEAF: HOLLOW CORE SWING FINISH: PAINT HARDWARE: LEVEL HANDLE LOCKS: n/a SEALS: n/a GLASS: n/a MISC: LIFT OFF HINGES	FRAME: TIMBER FINISH: PAINT LEAF: HOLLOW CORE CAVITY SLIDING FINISH: PAINT HARDWARE: FINGER PULLS LOCKS: n/a SEALS: n/a GLASS: n/a MISC: n/a	FRAME: TIMBER FINISH: PAINT LEAF: HOLLOW CORE SWING FINISH: PAINT HARDWARE: LEVEL HANDLE LOCKS: n/a SEALS: n/a GLASS: n/a MISC: n/a	FRAME: TIMBER FINISH: PAINT LEAF: HOLLOW CORE CAVITY SLIDING FINISH: PAINT HARDWARE: FINGER PULLS LOCKS: n/a SEALS: n/a GLASS: n/a MISC: n/a	FRAME: TIMBER FINISH: PAINT LEAF: HOLLOW CORE SWING FINISH: PAINT HARDWARE: LEVEL HANDLE LOCKS: n/a SEALS: n/a GLASS: n/a MISC: LIFT-OFF HINGES	FRAME: TIMBER FINISH: PAINT LEAF: HOLLOW CORE CAVITY SLIDING FINISH: PAINT HARDWARE: FINGER PULLS LOCKS: n/a SEALS: n/a GLASS: n/a MISC: n/a	FRAME: TIMBER FINISH: PAINT LEAF: HOLLOW CORE DOUBLE SWING FINISH: PAINT HARDWARE: LEVER HANDLES LOCKS: n/a SEALS: n/a GLASS: n/a MISC: n/a	FRAME: TIMBER FINISH: PAINT LEAF: HOLLOW CORE CAVITY SLIDING FINISH: PAINT HARDWARE: FINGER PULLS LOCKS: n/a SEALS: n/a GLASS: n/a MISC: n/a	FRAME: TIMBER FINISH: PAINT LEAF: HOLLOW CORE SWING FINISH: PAINT HARDWARE: LEVEL HANDLE LOCKS: n/a SEALS: n/a GLASS: n/a MISC: LIFT-OFF HINGES	FRAME: TIMBER FINISH: PAINT LEAF: HOLLOW CORE CAVITY SLIDING FINISH: PAINT HARDWARE: FINGER PULLS LOCKS: n/a SEALS: n/a GLASS: n/a MISC: n/a



DOOR : D25	DOOR : D26	DOOR : D27	DOOR : D28	WINDOW : W01	WINDOW : W02	WINDOW : W03	WINDOW : W04	WINDOW : W05	WINDOW : W06
FRAME: TIMBER FINISH: PAINT LEAF: HOLLOW CORE CAVITY SLIDING FINISH: PAINT HARDWARE: FINGER PULLS LOCKS: n/a SEALS: n/a GLASS: n/a MISC: n/a	FRAME: TIMBER FINISH: PAINT LEAF: HOLLOW CORE CAVITY SLIDING FINISH: PAINT HARDWARE: FINGER PULLS LOCKS: n/a SEALS: n/a GLASS: n/a MISC: n/a	FRAME: STEEL FINISH: PAINT LEAF: PANEL LIFT GARAGE DOOR FINISH: PAINT HARDWARE: AUTOMATIC OPENING LOCKS: n/a SEALS: WEATHER GLASS: n/a MISC: n/a	FRAME: STEEL FINISH: PAINT LEAF: PANEL LIFT GARAGE DOOR FINISH: PAINT HARDWARE: AUTOMATIC OPENING LOCKS: n/a SEALS: WEATHER GLASS: n/a MISC: n/a	FRAME: ALUMINIUM FINISH: NATURAL ANOISED LEAF: KEY GLASS: G01 FLY-SCREENS	FRAME: ALUMINIUM FINISH: NATURAL ANOISED LEAF: KEY GLASS: G01 FLY-SCREENS	FRAME: ALUMINIUM FINISH: NATURAL ANOISED LEAF: KEY GLASS: G01 FLY-SCREENS	FRAME: ALUMINIUM FINISH: NATURAL ANOISED LEAF: KEY GLASS: G01 FLY-SCREENS	FRAME: ALUMINIUM FINISH: NATURAL ANOISED LEAF: KEY GLASS: G01 FLY-SCREENS	FRAME: ALUMINIUM FINISH: NATURAL ANOISED LEAF: KEY GLASS: G01 FLY-SCREENS



WINDOW : W07	WINDOW : W08	WINDOW : W09	WINDOW : W10	WINDOW : W11	WINDOW : W12	WINDOW : W13	WINDOW : W14	WINDOW : W15	WINDOW : W16	WINDOW : W17
FRAME: ALUMINIUM FINISH: NATURAL ANOISED LOCKS: n/a GLASS: G01 MISC: n/a	FRAME: ALUMINIUM FINISH: NATURAL ANOISED LOCKS: n/a GLASS: G01 MISC: n/a	FRAME: ALUMINIUM FINISH: NATURAL ANOISED LOCKS: n/a GLASS: G01 MISC: n/a	FRAME: ALUMINIUM FINISH: NATURAL ANOISED LOCKS: n/a GLASS: G01 MISC: n/a	FRAME: ALUMINIUM FINISH: NATURAL ANOISED LOCKS: n/a GLASS: G01 MISC: n/a	FRAME: ALUMINIUM FINISH: NATURAL ANOISED LOCKS: n/a GLASS: G01 FLY-SCREENS	FRAME: ALUMINIUM FINISH: NATURAL ANOISED LOCKS: n/a GLASS: G01 FLY-SCREENS	FRAME: ALUMINIUM FINISH: NATURAL ANOISED LOCKS: n/a GLASS: G01 FLY-SCREENS	FRAME: ALUMINIUM FINISH: NATURAL ANOISED LOCKS: n/a GLASS: G01 FLY-SCREENS	FRAME: ALUMINIUM FINISH: NATURAL ANOISED LOCKS: n/a GLASS: G01 FLY-SCREENS	FRAME: ALUMINIUM FINISH: NATURAL ANOISED LOCKS: n/a GLASS: G01 FLY-SCREENS



WINDOW : W18	WINDOW : W19	WINDOW : W20	WINDOW : W21	WINDOW : W22	WINDOW : W23	WINDOW : W24	WINDOW : W25	WINDOW : W26
FRAME: ALUMINIUM FINISH: NATURAL ANOISED LOCKS: n/a GLASS: G01 MISC: n/a	FRAME: ALUMINIUM FINISH: NATURAL ANOISED LOCKS: KEY GLASS: G01 FLYSCREENS	FRAME: ALUMINIUM FINISH: NATURAL ANOISED LOCKS: n/a GLASS: G01 OBSCURED GLASS	FRAME: ALUMINIUM FINISH: NATURAL ANOISED LOCKS: n/a GLASS: G01 OBSCURED GLASS	FRAME: ALUMINIUM FINISH: NATURAL ANOISED LOCKS: n/a GLASS: G01 OBSCURED GLASS	FRAME: ALUMINIUM FINISH: NATURAL ANOISED LOCKS: n/a GLASS: G01 OBSCURED GLASS	FRAME: ALUMINIUM FINISH: NATURAL ANOISED LOCKS: KEY GLASS: G01 FLY-SCREENS	FRAME: ALUMINIUM FINISH: NATURAL ANOISED LOCKS: KEY GLASS: G01 FLY-SCREENS	FRAME: ALUMINIUM FINISH: NATURAL ANOISED LOCKS: KEY GLASS: G01 FLY-SCREENS

DOOR AND WINDOW CONSTRUCTION NOTES

- ALL SCHEDULED WINDOWS ARE VIEWED FROM OUTSIDE AND ALL SCHEDULED DOORS ARE VIEWED FROM THE HINGED SIDE.
- WINDOWS & GLAZED DOORS TO COMPLY WITH AS2047.
- ALL GLASS COMPONENTS TO COMPLY WITH AS1288.
- SUBMIT DOOR AND WINDOW SHOP DRAWINGS FOR APPROVAL PRIOR TO MANUFACTURE.
- ALL DOOR AND WINDOW HARDWARE AND KEYING TO BE CO-ORDINATED AND CONFIRMED WITH ARCHITECT PRIOR TO INSTALLATION.
- HINGES TO BE STAINLESS STEEL FIXED PIN TYPE, MINIMUM 3no. PER DOOR, UNLESS OTHERWISE NOTED.
- DOOR LEVER AND PULL HANDLES TO BE MOUNTED AT 1050 AFFL TO CENTRE POINT.
- FIBROUS OR RUBBER WEATHER SEALS TO BE PROVIDED TO EACH EDGE OF ALL EXTERNAL DOORS.
- INTERNAL ALUMINIUM DIMINISHING STRIPS TO BE INSTALLED DIRECTLY UNDER DOOR LEAFS WHERE TWO FLOOR FINISHES JOIN. PRODUCT SELECTION AND FINISH TO BE CONFIRMED WITH ARCHITECT.
- ALUMINIUM THRESHOLD PLATES TO BE INSTALLED UNDER ALL EXTERNAL DOORS. PRODUCT SELECTION AND FINISH TO BE CONFIRMED WITH ARCHITECT.

FG

ALUMINIUM FRAME SET WITHIN WALL CLADDING

FRAME TO THREE SIDES, FRONT EDGE EXPOSED GLASS

ENTRY CANOPY

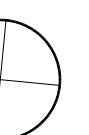
FRAME: ALUMINIUM
FINISH: NATURAL ANOISED
GLASS: G03
MISC: n/a

Drawing Revision History

Issue	Description	Date	Appr.
1	CONSTRUCTION ISSUE	07.02.19	SS

True North

Project North



Copyright:

Do not scale off drawing, use noted dimensions only. This drawing to be read in conjunction with all relevant contracts, specifications, schedules, reports and drawings provided by the Architect. All dimensions and levels are to be verified on-site prior to commencement of any works, preparation of shop drawings or fabrication of components. Duplication of the information presented without authorisation is prohibited. Stalford Meek Architects are to be contacted to advise on ownership of the Intellectual property.

Client:

Michelle Zanon and Brendan Clover

Job:

Zanon and Clover Residence

Address:

12 Anthony Street,
Henley Beach, SA, 5022

Title:

DOOR AND WINDOW SCHEDULE

Scale:

1:100 @ A1 Date: 25.05.2018

Drawn:

CS Approved: SS

Job No:

14006

Org No:

A600

Proj Issue:

-